



Poultry Assist

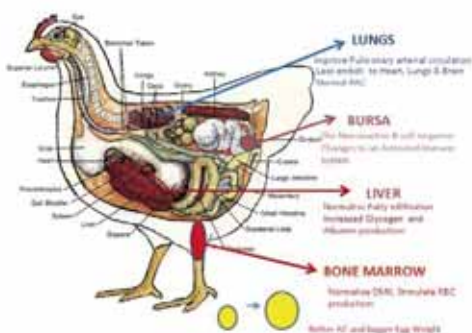
Registered by Natrocine (Pty) Ltd as Poultry Assist # TBA VTBA RSA Act 36/1947

Natural Performance Promoter to improve Feed Efficiency, Yield Mass and Mortality associated with Dormant Infections.

- ✓ Newcastle Disease?
- ✓ Need to change away from antibiotics and growth stimulants?
- ✓ Salmonella free eggs?
- ✓ Improve Albumin and Glycogen production?
- ✓ Low production?
- ✓ Absorption problems?
- ✓ Vertical transmission of pathogens from parent stock

- Stabilise damage and activates and restores the immune system to good health resulting in dramatically reduced mortality rates
- Eliminates fatty infiltration in the liver and bone marrow and rebuild into the muscular system resulting in a better carcas weight
- Oponifies dormant macrophage pathogens viral and bsacterial and ensure respiratory burst by lysosomal enymes in phagosomes thus reducing zoonotic infections
- Vastly improved shelflife of the product

Results with Natrocine Poultry Assist



Natural Medicinal Solutions for the Agricultural Industry

“A number of problems have been found in the wake of new biological discoveries and molecular development as to the benefit of mankind. It was initially thought that we could manipulate life with the production of seemingly any new molecules, the one more potent than the other. These medicines have impacted on the ecological environment by causing deviation from normal biological processes as well as the immune response processes of animals and humans with significant side effects on the biological processes. This is true for humans but is particularly prevalent among domestic animals raised on supplements such as growth stimulants and medicaments including antibiotics. Natrocine[®] has been formed with the specific product objective to provide compositions that will alleviate problems associated with the operation of the immune system.

The Name **Natrocine[®]** has been derived from Natural, Organic, Medicine and Science. We hope to use all these approaches and provide our children with a healthier world.

Treatment with **Natrocine[®]** Poultry Assist throughout the cycle from breeders to Parent stock to broiler and layer forms will make results more predictable and ensure that the final product is Zoonosis safe. **Natrocine[®]** also issues a certificate of conformance to participating producers.

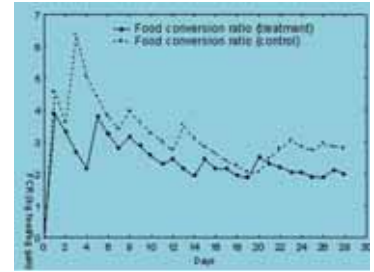
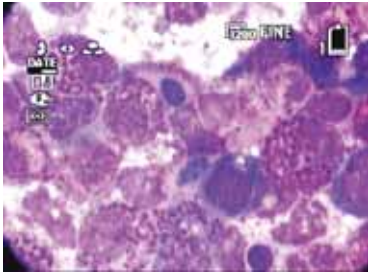


Natrocine[®] (Pty) Ltd

Co Registration No: 2007/006686/07
www.natrocine.co.za

For trade and product enquiries,
contact enquiries@natrocine.co.za,
or phone our Sales Line on +27 82 453 6057

PO Box 1677, Oudtshoorn, 6625, South Africa



- Every stage of the breeding and production cycle has an enormous impact on the final outcome of the product, the industry and its consumers and market.
- Research has shown that commercially bred poultry have dormant infections in the bone marrow that are vertically transferred to the unborn chicks causing under performance with unpredictable results.
- The problems is more severe where chickens are constantly under stress such as in the traditional battery.
- Unbalanced food composition as well as overfeeding can give rise to fatty changes in the liver as well as in the bone marrow resulting in partial depletion of the function of the bone marrow.
- Commercially and medically there is an imminent problem looming in the challenge to define a 'healthy chicken'.
- **Natrocine**[®] Poultry Assist can be administered acutely under current conditions from Day Old chicks/broiler or preventatively by constantly and continually treating the whole production cycle from breeders. Treatment of layers are throughout the production period.
- **Natrocine**[®] Poultry Assist is supplemented by **Natrocine**[®] feed support.

Haematological Effects of Natrocine Layer Assist 2000/24000 Trial

Group	Count	DMI
Control	11	80-70%
TEST	39	<10,30%

Overall T-cell stimulation with increased antibody and RBC production, DMI decreased to <10,30% showing healthy status

LIVER HISTOLOGY

Liver shows less fatty infiltration after treatment with Natrocine Poultry Assist thus allowing for effective glycogen and albumin production

Liver and Gall Bladder normalised after treatment with Natrocine Poultry Assist with minimum bile production as a direct result of less RBC destruction. The Control not only shows an enlarged gall bladder but also a pericardial effusion with a brown-straw colour suggestion accumulation of bile products in the circulation as a result of high destruction of Red Blood Cells.

Listed on
EcoFirms
www.ecofirms.com

